

CDOT Consultant Server Setup



This document describes the setup of the CDOT Workspace if it is to reside on a server.

Setting Up The Workspace

1. Read the CDOT MicroStation/InRoads Configuration requirements and installation instructions. This information is found at the following link on the CDOT website:

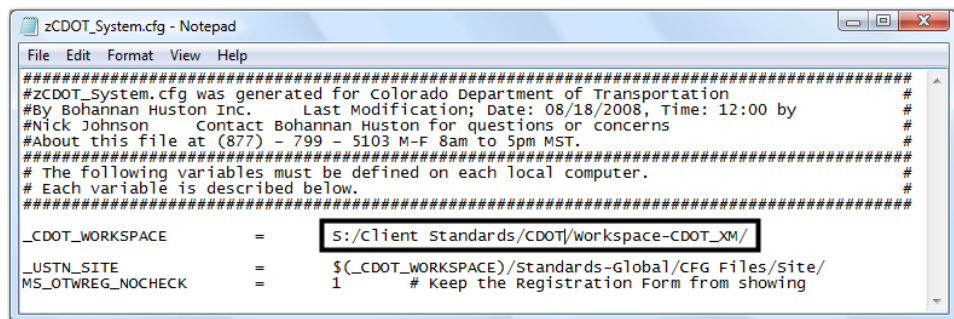
http://www.dot.state.co.us/DesignSupport/CDOT_Microstation_Inroads_Configuration/XM.htm

This will place the workspace on the server at the specified location.

Note: In the examples below, the following server location is used. “S:\Client Standards\CDOT\”

2. Open and review the CDOT Configuration ReadMe file. It is located in S:\Client Standards\CDOT\Workspace-CDOT_XM\CDOT Notes.
3. Follow step 7 on the installation instructions to activate the server based workspace for MicroStation, InRoads and Redline. For MicroStation and InRoads, edit the following file:

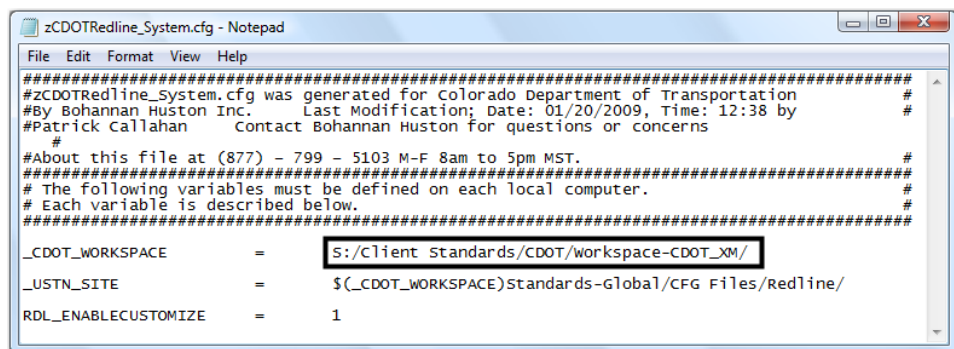
C:\Program Files\Bentley\MicroStation\config\system\zCDOT_System.cfg

A screenshot of a Notepad window titled 'zCDOT_System.cfg - Notepad'. The window shows a configuration file with several lines of text. The line for '_CDOT_WORKSPACE' is highlighted with a black box, showing the path 'S:/Client Standards/CDOT/workspace-CDOT_XM/'. Other lines include '_USTN_SITE' and 'MS_OTWREG_NOCHECK'.

```
#####
#zCDOT_System.cfg was generated for Colorado Department of Transportation #
#By Bohannon Huston Inc. Last Modification; Date: 08/18/2008, Time: 12:00 by #
#Nick Johnson Contact Bohannon Huston for questions or concerns #
#About this file at (877) - 799 - 5103 M-F 8am to 5pm MST. #
#####
# The following variables must be defined on each local computer. #
# Each variable is described below. #
#####
_CDOT_WORKSPACE = S:/Client Standards/CDOT/workspace-CDOT_XM/
_USTN_SITE = $(_CDOT_WORKSPACE)/Standards-Global/CFG Files/site/
MS_OTWREG_NOCHECK = 1 # keep the Registration Form from showing
```

For Redline, edit the following file:

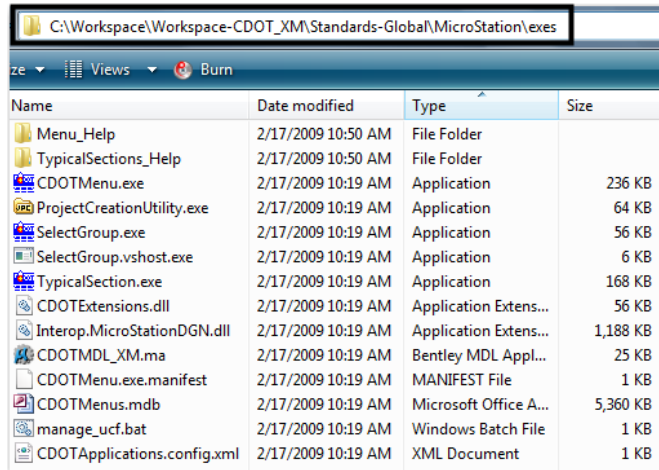
C:\Program Files\Bentley\Redline\config\system\zCDOTRedline_System.cfg

A screenshot of a Notepad window titled 'zCDOTRedline_System.cfg - Notepad'. The window shows a configuration file with several lines of text. The line for '_CDOT_WORKSPACE' is highlighted with a black box, showing the path 'S:/Client Standards/CDOT/workspace-CDOT_XM/'. Other lines include '_USTN_SITE' and 'RDL_ENABLECUSTOMIZE'.

```
#####
#zCDOTRedline_System.cfg was generated for Colorado Department of Transportation #
#By Bohannon Huston Inc. Last Modification; Date: 01/20/2009, Time: 12:38 by #
#Patrick Callahan Contact Bohannon Huston for questions or concerns #
#
#About this file at (877) - 799 - 5103 M-F 8am to 5pm MST. #
#####
# The following variables must be defined on each local computer. #
# Each variable is described below. #
#####
_CDOT_WORKSPACE = S:/Client Standards/CDOT/workspace-CDOT_XM/
_USTN_SITE = $(_CDOT_WORKSPACE)Standards-Global/CFG Files/Redline/
RDL_ENABLECUSTOMIZE = 1
```

CDOT Consultant Server Setup.pdf

- The exe folder in the configuration must be copied onto the user's computer in order for the programs to function properly. The *exes* folder should be placed in the following location: *C:\Workspace\Workspace-CDOT_XM\Standards-Global\MicroStation\exes*. This is required because the custom extensions are built on .NET framework and there are Windows securities that forbid running them on a server.



- For those using the *ProjectCreationUtility.exe*, copy the following workspace folders (and their data) to the *C:\Workspace* directory:

Workspace-CDOT_XM\Standards-Local\Projects

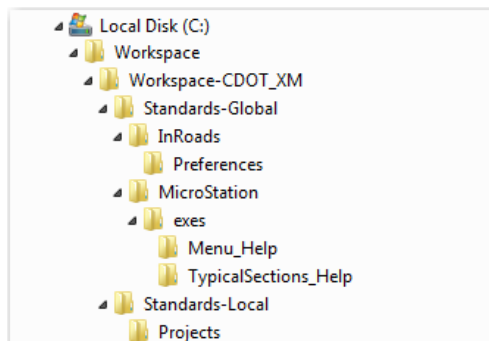
Workspace-CDOT_XM\Standards-Global\InRoads\Preferences

Workspace-CDOT_XM\Standards-Global\MicroStation\Sheet Borders

The pcf file created by the *ProjectCreationUtility.exe* program will be placed in the following location on the computer used to run the program:

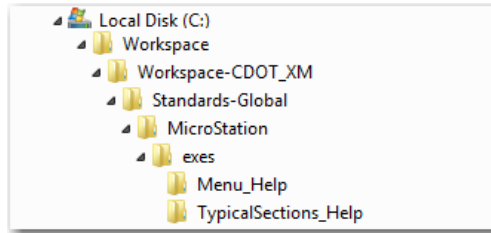
C:\Workspace\Workspace-CDOT_XM\Standards-Local\Projects

- Copy this pcf file to the *S:\Client Standards\CDOT\Workspace-CDOT_XM\Standards-Local\Projects*. All users accessing this project will use the pcf file located on the server because the MicroStation configuration variables point to this directory.
- Below is an example of the folder structure required on the local drive for those using the *ProjectCreationUtility.exe*:



CDOT Consultant Server Setup.pdf

8. The folder structure required on the local drive for those not using the *ProjectCreationUtility.exe* is:



These folders and files do not control the resources used by the program.

9. Follow step 14 on the installation instructions to deactivate the workspaces.